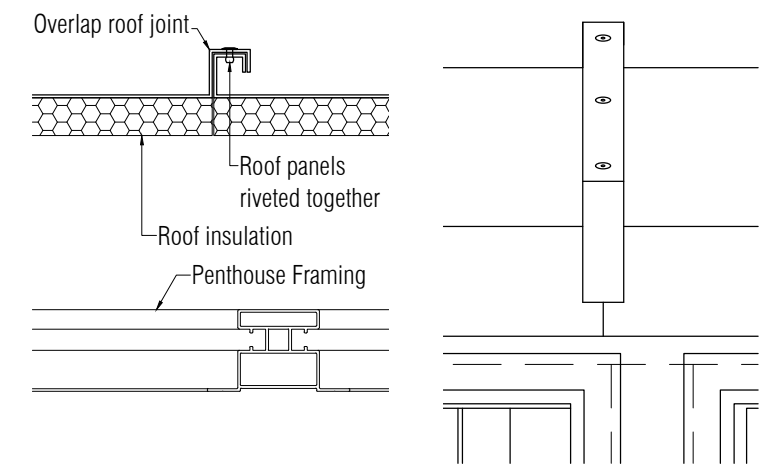
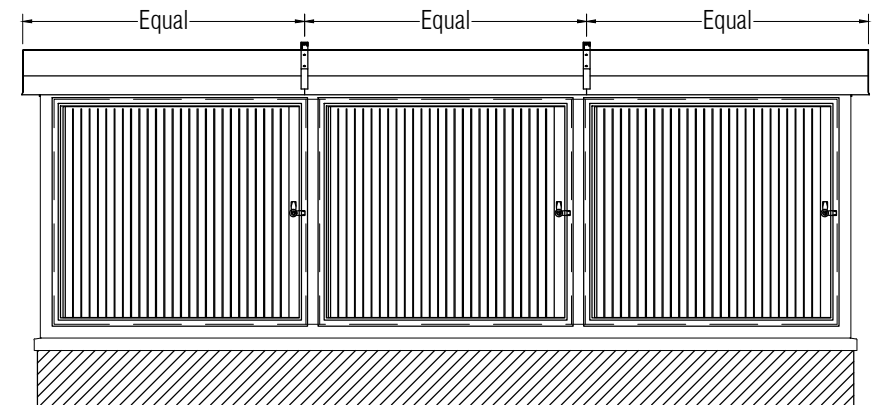
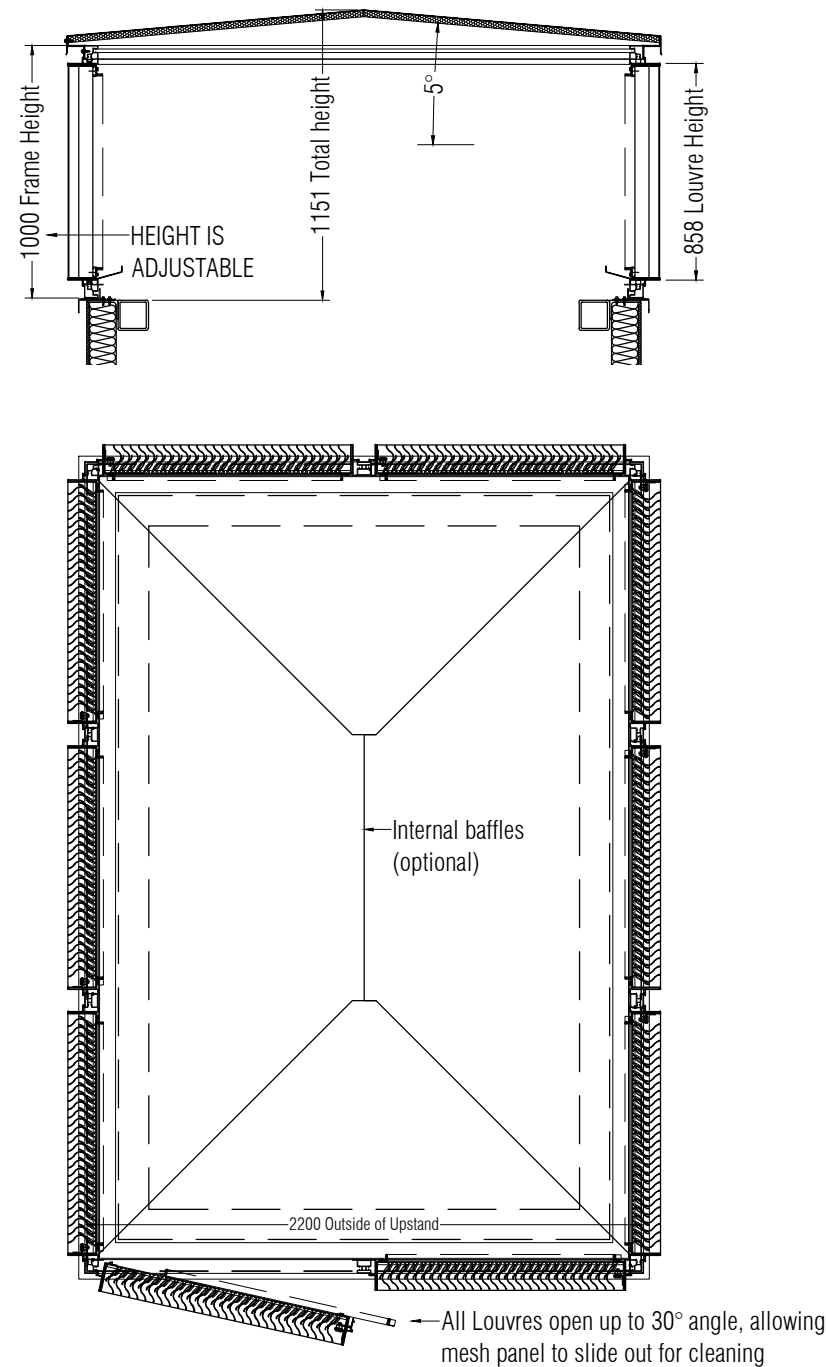
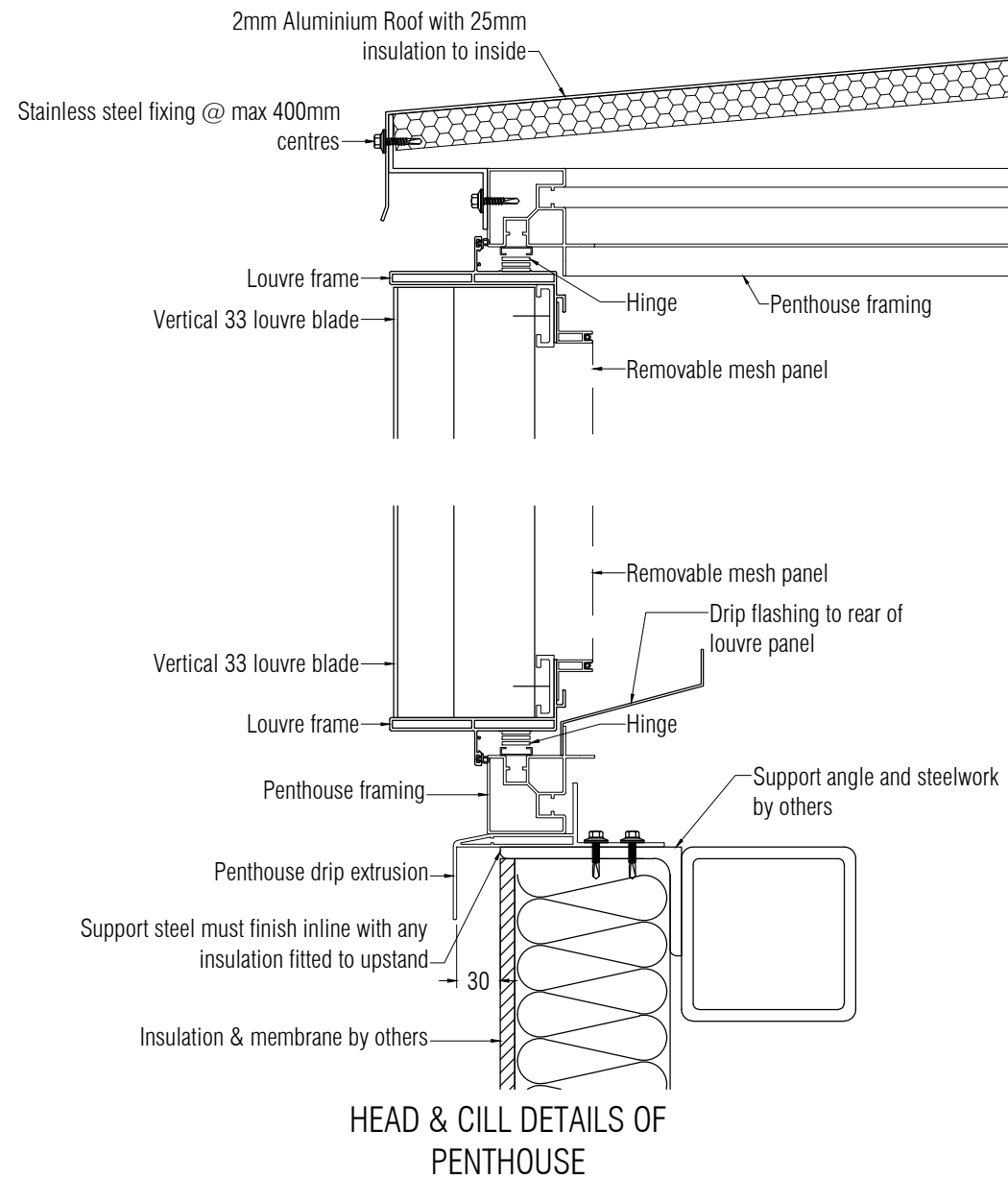


QEF VERTICAL 33 MODULAR PENTHOUSE



Specification

Manufacture & Reference: QEF Vertical 33 Modular Penthouse Louvre System, supplied and installed by QEF Ltd.
Tel: +353 (0)56 776 4910
Email: sales@qefltd.ie

Description: QEF Modular Penthouse system consisting of individual hinged louvres into support framing, allowing easy access to insect mesh panels for cleaning.

Louvre type: QEF Vertical 33

Blade pitch: 33mm.

Material: Manufactured from extruded aluminium alloy 6063 T6.

Finish: Polyester powder coated to RAL or BS colour, in matt, satin or gloss finishes

Dimensions: All Louvres are bespoke to clients needs

Performance: Louvre have an inlet cd of 0.308. Nominal Free Area: 56%

Fixing: Penthouse is fixed down to prepared and weathered upstand supplied by others.

Accessories: Internal galvanised steel baffles/ insulated roof.

Performance Classification

Limiting Face Velocity	Rating
0.0m/s Vent	A2
2.0m/s Vent	A2
3.5m/s Vent	A2

Results provided by BSRIA Limited against BSEN 13030



Commercial Centre, Dublin
Road, Kilkenny, R95 TR82,
Ireland

Tel: +353 (0)56 776 4910
Website: www.qefltd.ie
Email: sales@qefltd.ie

Drawn: RAB	Date: 06/04/2020	Scale: NTS
Dwg.No. P/MOD/V33/WR	Rev.:	B