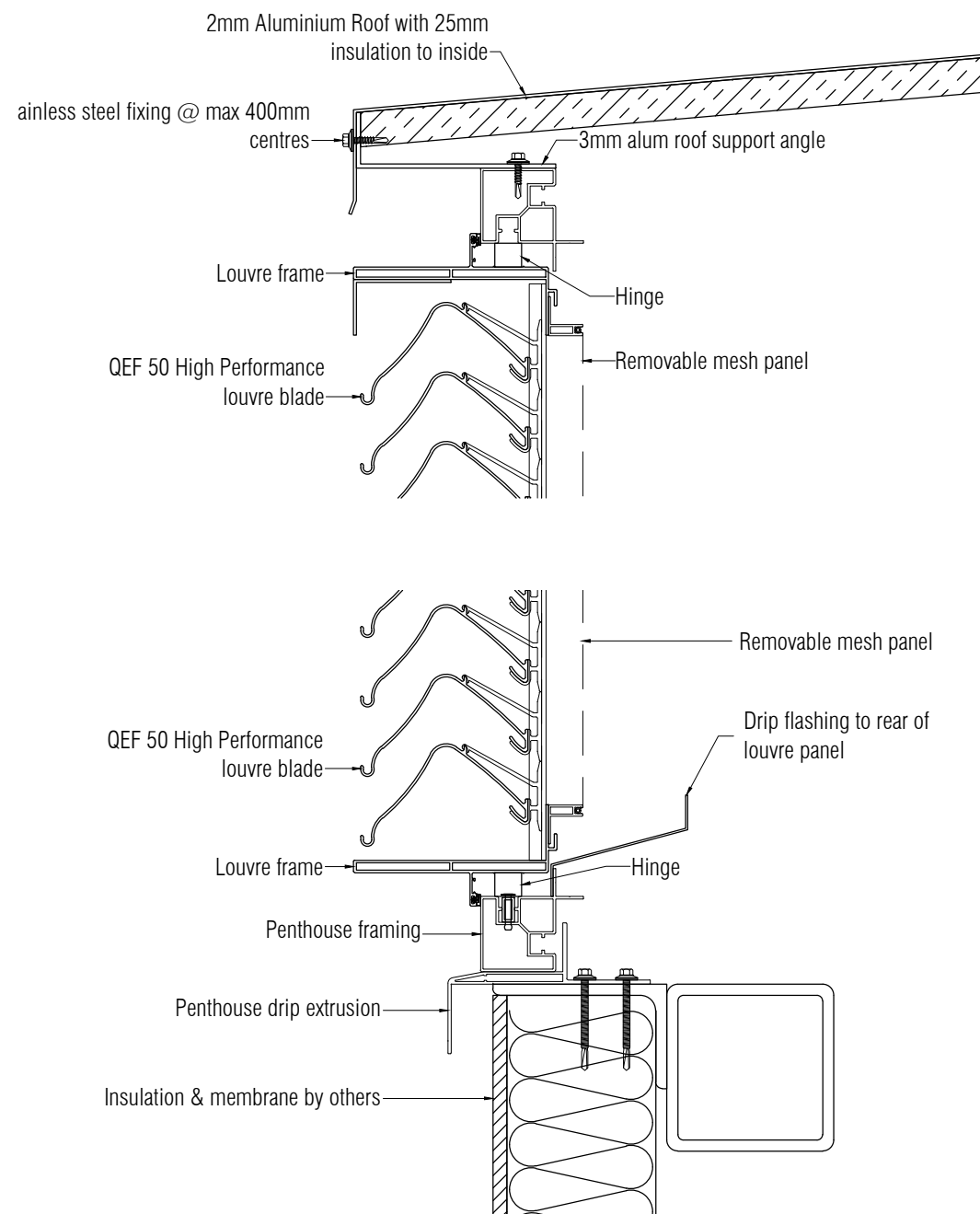
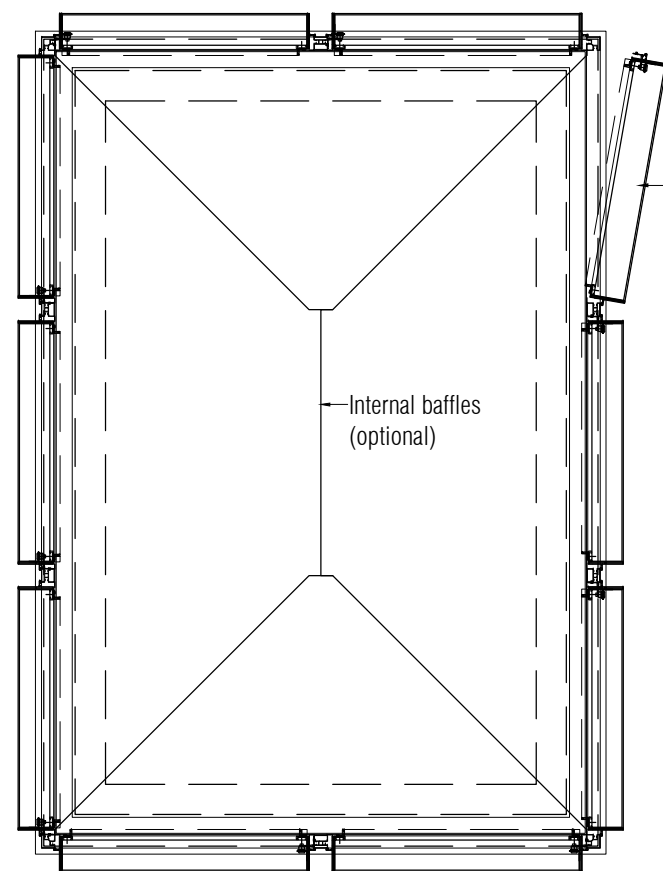
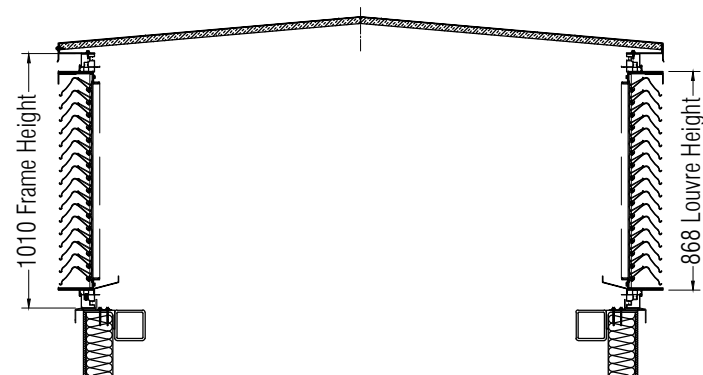


QEF 50 HIGH PERFORMANCE MODULAR PENTHOUSE

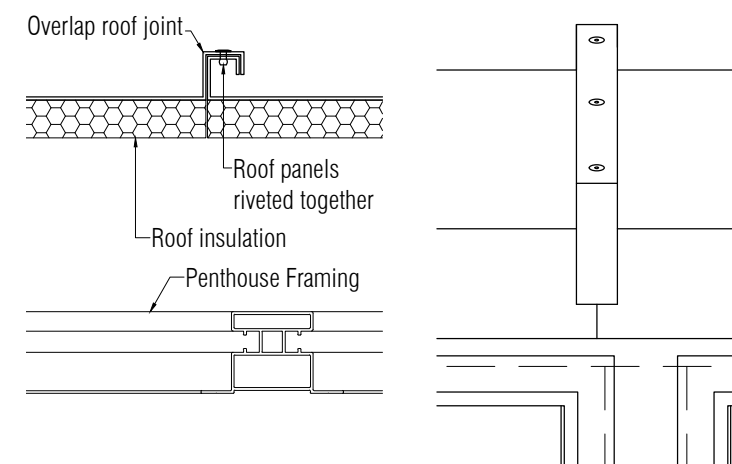


HEAD & CILL DETAILS OF PENTHOUSE



SECTION, ELEVATION & PLAN DETAILS OF PENTHOUSE

All louvre open to 30° angle to allow removal and cleaning of insect mesh



SECTION & ELEVATION DETAILS OF ROOF JOINT

Specification

Manufacture & Reference: QEF 50 High Performance Modular Penthouse Louvre System, supplied and installed by QEF Ltd. Tel: +353 (0)56 776 4910 Email: sales@qefltd.ie

Description: QEF Modular Penthouse system consisting of individual hinged louvres into support framing, allowing easy access to insect mesh panels for cleaning.

Louvre type: QEF 50 High Performance

Blade pitch: 50mm.

Material: Manufactured from extruded aluminium alloy 6063 T6.

Finish: Polyester powder coated to RAL or BS colour, in matt, satin or gloss finishes

Dimensions: All Louvres are bespoke to clients needs

Performance: Louvre have an inlet cd of 0.24. Nominal Free Area: 52%

Fixing: Penthouse is fixed down to prepared

and weathered upstand supplied by others.

Accessories: Internal galvanised steel baffles/ insulated roof.

Performance Classification

Limiting Face Velocity	Rating
0m/s Vent	A3
1.5m/s Vent	A3
2.4m/s Vent	A3

Results provided by BSRIA Limited against BSEN 13030



Commercial Centre, Dublin Road, Kilkenny, R95 TR82, Ireland

Tel: +353 (0)56 776 4910 Website: www.qefltd.ie Email: sales@qefltd.ie

Drawn: RAB	Date: 25/01/2021	Scale: NTS
Dwg.No: P/MOD/50HP/WR	Rev: B	