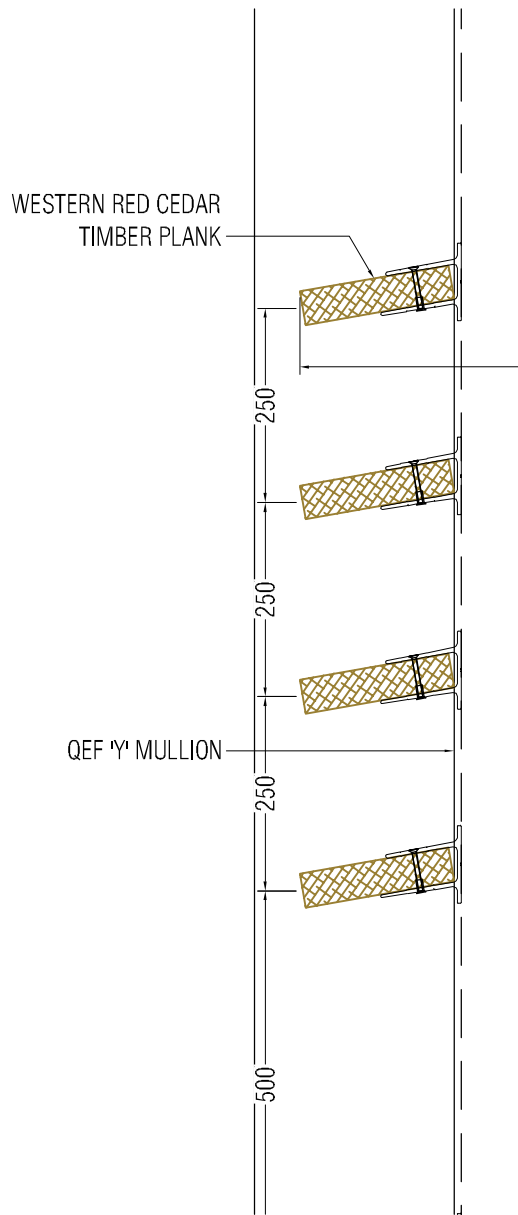
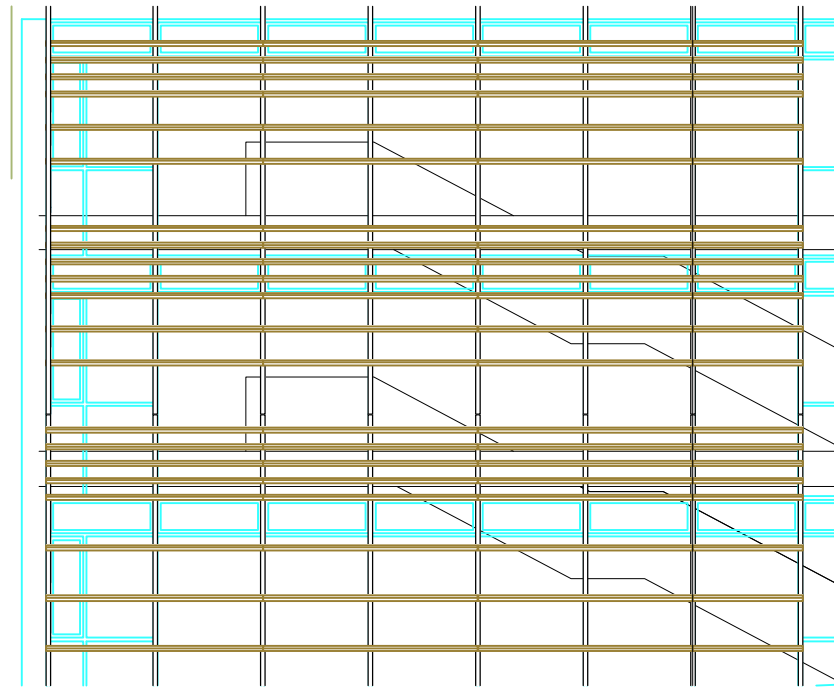


# QEF CEDAR 200x50 MULLION/ BRKT BRISE SOLEIL

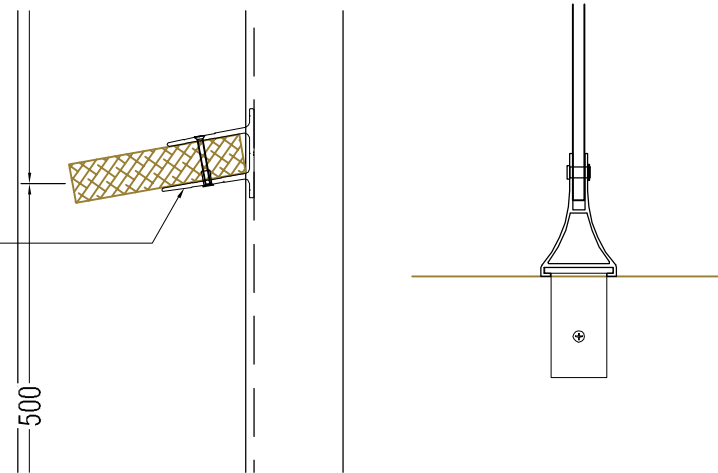


TYPICAL SECTION DETAILS



ELEVATION

TIMBER SLOTTED INTO  
EXTRUDED CLIPS AND FIXED IN  
POSITION WITH S/S TIMBER  
SCREWS



CLIP SECTION DETAILS

PLAN DETAIL OF AEROFOIL CONNECTION

## Specification

**Manufacturer and reference:** QEF 200x50  
Western Red Cedar Brise Soleil system supplied and  
installed by QEF Ltd.  
Tel: +353 (0)56 776 4910  
Fax: +353 (0)56 776 1557.

**Description:** Machined 200x50 Western Red  
Cedar Plank Brise Soleil system mounted on mullion  
Clip system.

**Blade Pitch:** To clients specification.

**Material:** Mullion System manufactured from  
extruded aluminium alloy 6063 T6.

**Finish:** Western Red Cedar self finish, Extruded  
aluminium polyester powder coated to RAL or BS  
colour.

**Dimensions:** As shown on drawings. Max span  
between mullions dependant upon loading  
requirements. Bespoke blade orientation can be  
contract specific - customer must specify requirement.

**Fixing:** To subcontractors details. A wide range of  
stainless, galvanised steel or aluminium fixing  
brackets is available for different fixing grounds,  
including steel, block & curtain walling.



Commercial Centre  
Dublin Road  
Kilkenny

Tel: +353 (0)56 776 4910  
Fax: +353 (0)56 776 1557  
Website: www.qefltd.ie  
Email: sales@qefltd.ie

Drawn:	Date:	Scale:
RAB	14/04/16	NTS
Drawn:	Rev:	
BS/CED/MC		